

# LAND LEASE/BTS

## HIGH TRAFFIC & GROWTH LOCATION ON SR 161

### LOCATION—EATONVILLE, WA

110 & 112 WASHINGTON — 14,484 +/- SF

113 MASHELL AVE N — 19,344 +/- SF

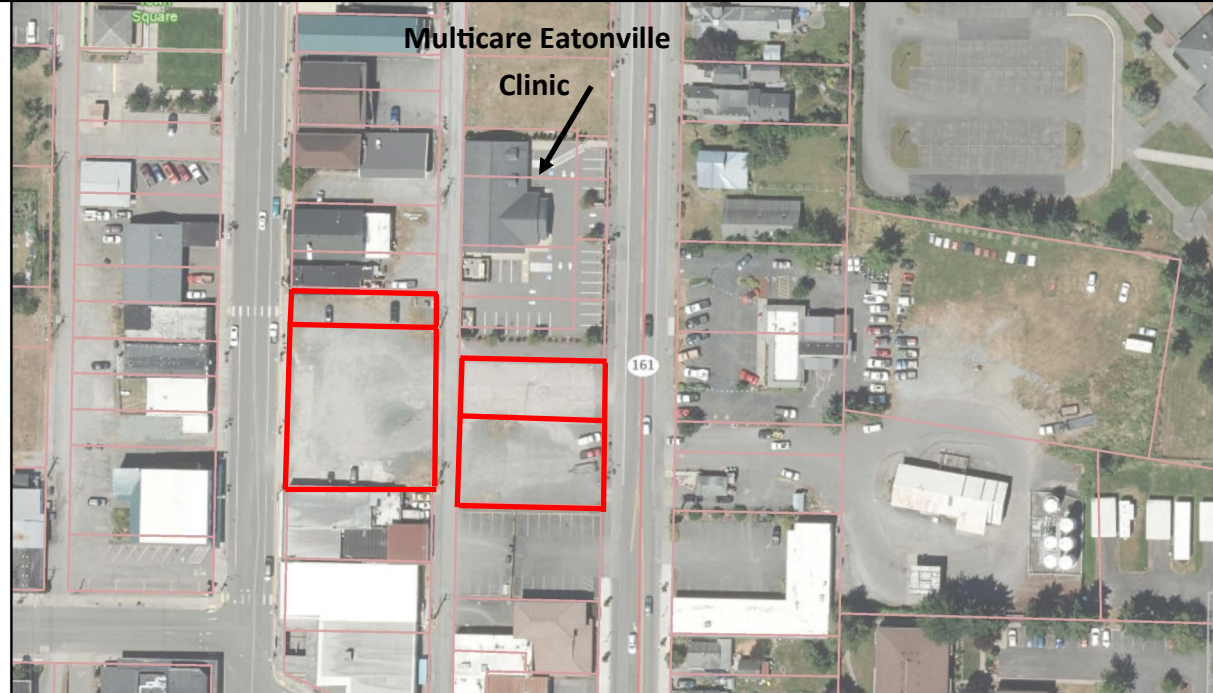
### PARCEL #'s

3605001750, 3605001760, 3605001610 &

0416143028

### ZONED

**C-1 DOWNTOWN COMMERCIAL DISTRICT**



***Hwy 161 frontage in the heart of downtown Eatonville. Surrounded by local and national tenants such as: Multicare Eatonville Clinic, Gypsy Wagon Espresso, Eatonville Liquor & Wine, Mill Haus Cider Co., Yogi's Smokehouse, The Coffehouse & Toasted Buns, Chopstix and more!***

### EXCLUSIVELY LISTED BY:

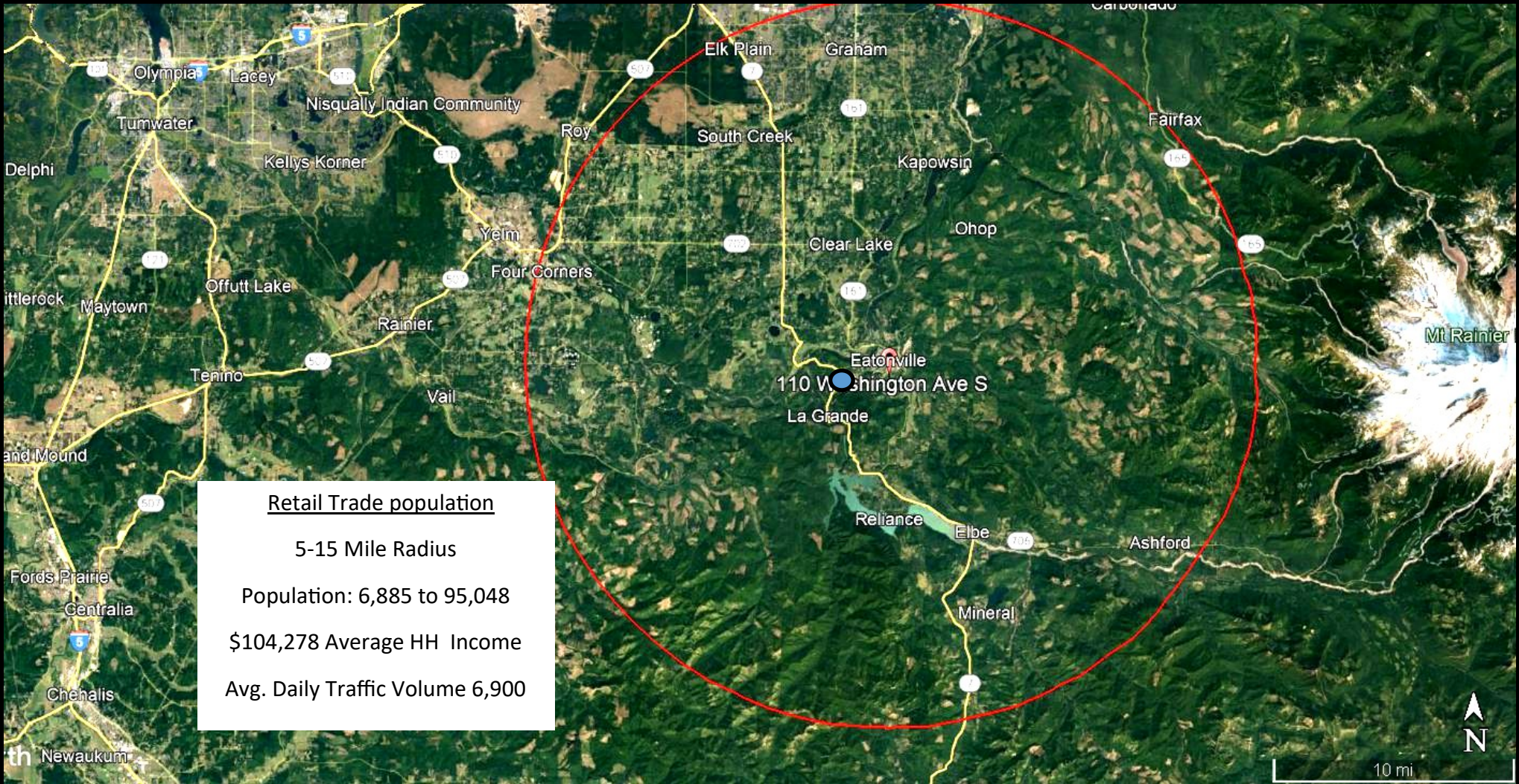
Pacific Rim Real Estate Group, Inc.

MIKE AVILA / [avila@pacrimre.net](mailto:avila@pacrimre.net)

253-961-4305



The information is provided without representation, warranty, or guarantee, expressed or implied as to its accuracy. The Prospective Buyer should conduct an independent investigation and verification of all matters deemed to be material. Consult your attorney, accountant, or other professional advisor.



**EXCLUSIVELY LISTED BY:**

**Pacific Rim Real Estate Group, Inc.**  
**MIKE AVILA / avila@pacrimre.net**  
**253-961-4305**



The information is provided without representation, warranty, or guarantee, expressed or implied as to its accuracy. The Prospective Buyer should conduct an independent investigation and verification of all matters deemed to be material. Consult your attorney, accountant, or other professional advisor.